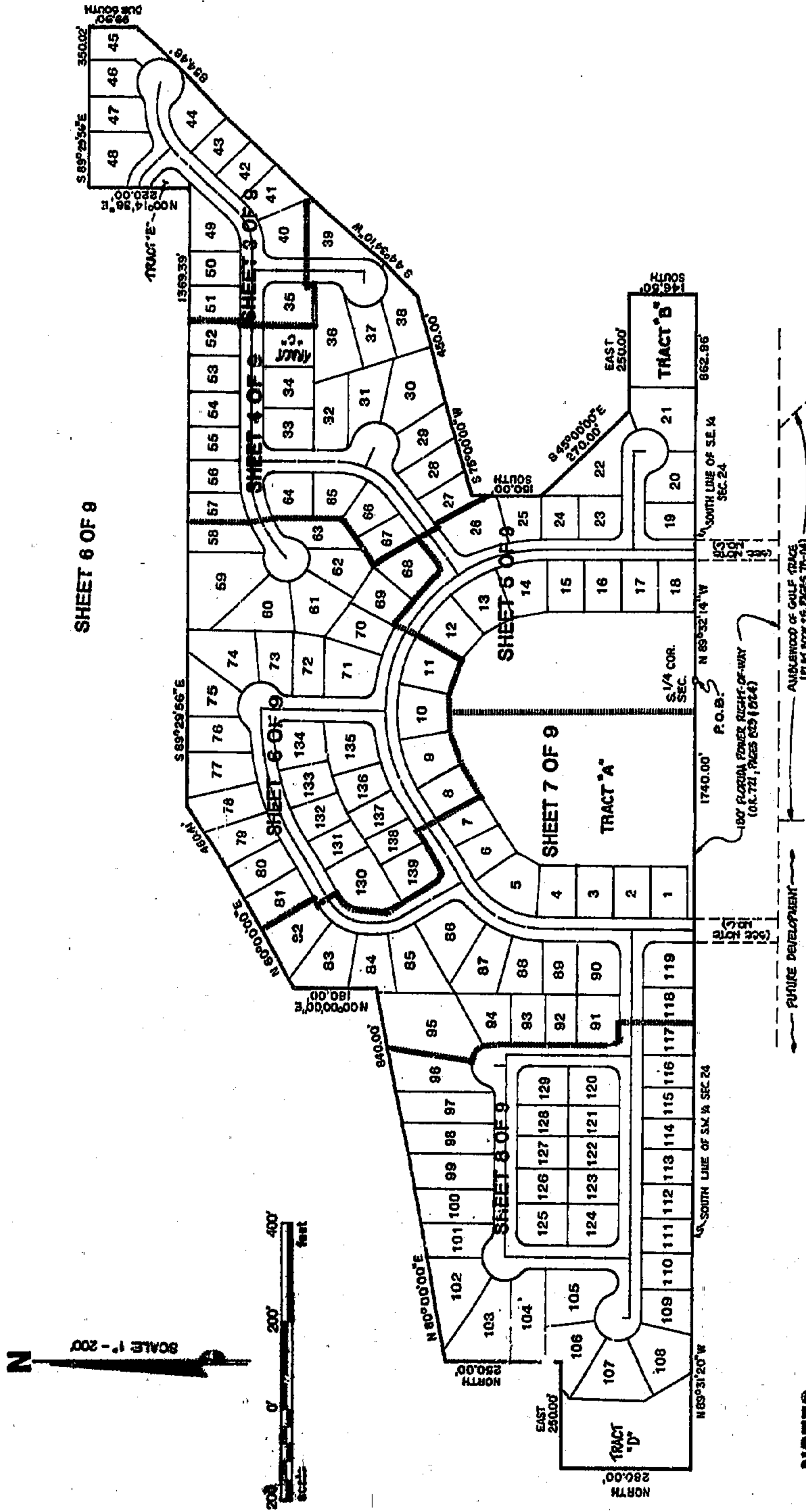




# GLENWOOD OF GULF TRACE

BEING A PART OF A PORTION OF TRACTS 45, 46, 47, 48, 57, 58, 59, AND 60 OF TAMPA-TARPOON SPRINGS LAND COMPANY SUBDIVISION PLAT BOOK 1, PAGES 68-70 AND A PART OF THE SOUTHEAST 1/4, AND A PART OF THE SOUTHWEST 1/4 OF SECTION 24, TOWNSHIP 26 SOUTH, RANGE 15 EAST, PASCO COUNTY, FLORIDA.



## NOTES

1. BEARINGS BASED ON THE SOUTH LINE OF THE SOUTHWEST 1/4 OF SECTION 24, HAVING AN ASSUMED BEARING OF N89°31'20"W.
2. TRACT "A" IS ENCUMBERED BY DRAINAGE AND UTILITY EASEMENTS AND PRESERVATION AREAS AND WILL BE DEEDED TO THE HOMEOWNERS' ASSOCIATION ALONG WITH MAINTENANCE RESPONSIBILITIES.
3. TRACTS "B" AND "D" ARE ENCUMBERED BY DRAINAGE AND UTILITY EASEMENTS AND CONSERVATION/PRESERVATION AREAS AND WILL BE DEEDED TO THE HOMEOWNERS' ASSOCIATION ALONG WITH MAINTENANCE RESPONSIBILITIES.
4. TRACT "C" AND "E" ARE ENCUMBERED BY DRAINAGE AND UTILITY EASEMENTS AND WILL BE DEEDED TO THE HOMEOWNERS' ASSOCIATION ALONG WITH MAINTENANCE RESPONSIBILITIES.
5. THERE MAY BE ADDITIONAL RESTRICTIONS THAT ARE NOT RECORDED ON THIS PLAT THAT MAY BE FOUND IN THE PUBLIC RECORDS OF THIS COUNTY.
6. PERMISSION TO CONSTRUCT ACROSS FLORIDA POWER RIGHT-OF-WAY BY VIRTUE OF DEED RECORDED IN O.R. BOOK 721, PAGES 823-824, AND FLORIDA POWER CORPORATION RIGHT-OF-WAY UTILIZATION NO. NP-19.

## LEGEND

- (P.R.M.) PERMANENT CONTROL POINT CON-RE... INCHURMENT SET No. 4055
- (P.R.M.) CONCRETE MONUMENT (FOUND) NO NUM-ER
- (P.C.P.) PERMANENT CONTROL POINT (SET) No.4054
- EASEMENT SIZE AND TYPE AS NOTED, ALSO THERE EXISTS A 10' UTILITY EASEMENT ALONG ALL LOT LINES AND TRACT LINES ADJACENT TO ALL STREETS
- (150) DENOTES CURVE DESIGNATION (SEE SHEET 9 OF 9 FOR CURVE TABLE)
- TRACT DENOTES TRACTS AND ROAD EASEMENTS AS RECORDED ON THE PLAT OF TAMPA-TARPOON SPRINGS LAND COMPANY SUBDIVISION P.B.1, PAGES 68-70. VACATED PER O.R. BOOK 1727, PAGES 1650-1655.

**KING ENGINEERING ASSOCIATES, INC.**

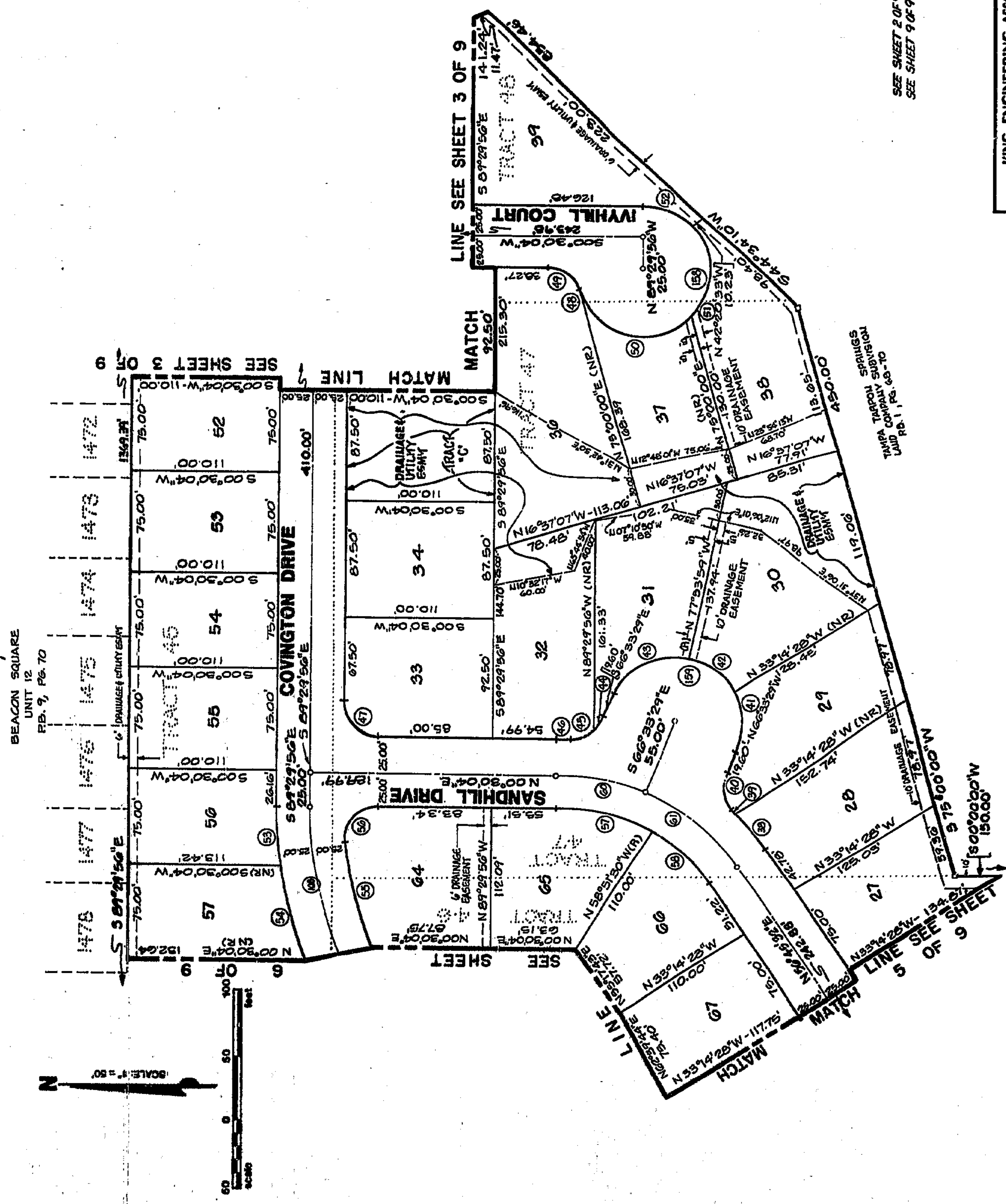
Engineers • Planners • Surveyors

8400 MASSACHUSETTS AVENUE • SUITE A-2 • NEW PORT RICHEY, FL 34653 • (813) 848-0000



# GLENWOOD OF GULF TRACE

BEING A REPLAT OF A PORTION OF TRACTS 45, 46, 47, 48, 57, 58, 59, AND 60 OF TAMPA-TARPOON SPRINGS LAND COMPANY SUBDIVISION PLAY BOOK 1, PAGES 68-70 AND A PART OF THE SOUTHEAST 1/4, AND A PART OF THE SOUTHWEST 1/4 OF SECTION 24, TOWNSHIP 26 SOUTH, RANGE 15 EAST, PASCO COUNTY, FLORIDA.



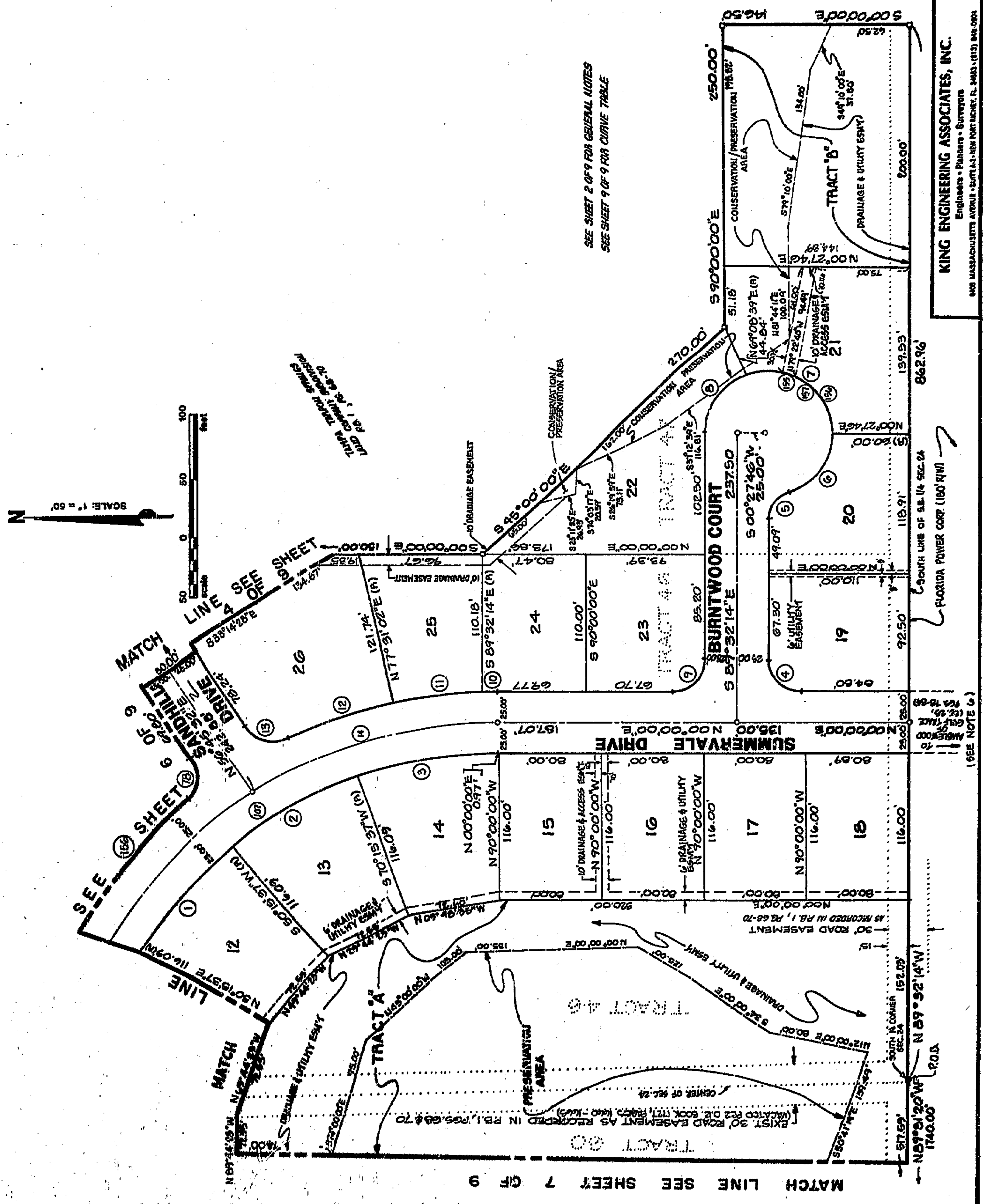
SEE SHEET 2 OF 9 FOR GENERAL NOTES  
SEE SHEET 9 OF 9 FOR CURVE TABLE

**KING ENGINEERING ASSOCIATES, INC.**  
Engineers • Planners • Surveyors  
808 MASSACHUSETTS AVENUE • SUITE A-2 • NEW PORT RICHEY, FL 34653 • (813) 848-0904

27/5

# GLENWOOD OF GULF TRACE

BEING A REPLAT OF A PORTION OF TRACTS 45, 46, 47, 48, 57, 58, 59, AND 60 OF TAMPA - TARPON SPRINGS LAND COMPANY SUBDIVISION PLAT BOOK 1, PAGES 66-70 AND A PART OF THE SOUTHEAST 1/4, AND A 969' OF THE SOUTHWEST 1/4 OF SECTION 24, TOWNSHIP 26 SOUTH, RANGE 15 EAST, PASCO COUNTY, FLORIDA.



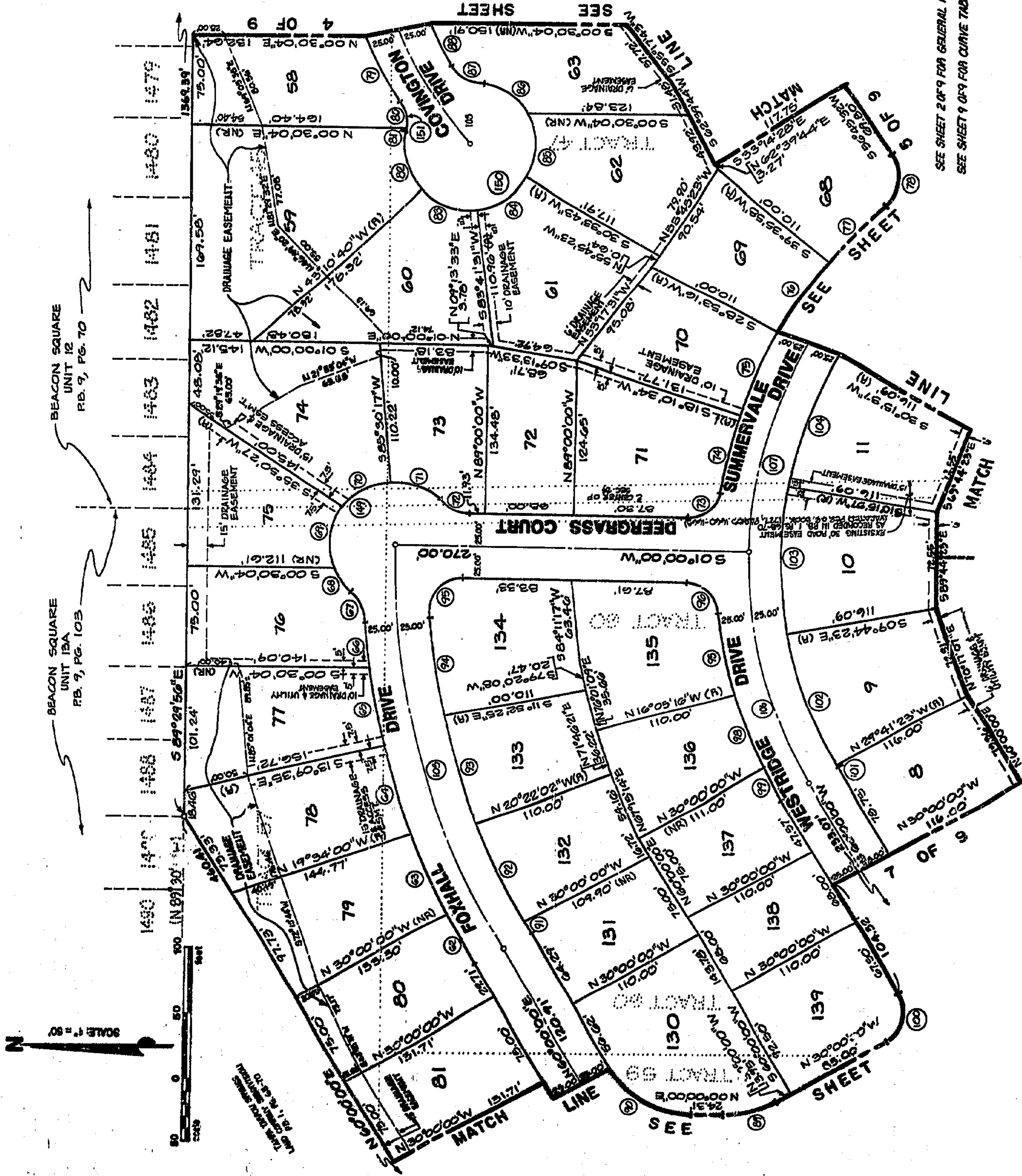
SEE SHEET 2 OF 9 FOR GENERAL NOTES  
SEE SHEET 9 OF 9 FOR CURVE TABLE

**KING ENGINEERING ASSOCIATES, INC.**  
Engineers • Planners • Surveyors  
400 MASSACHUSETTS AVENUE • SUITE 141 • NEW PORT RICHEY, FL 34643 • (813) 848-0904

SHEET 6 OF 9

# GLENWOOD OF GULF TRACE

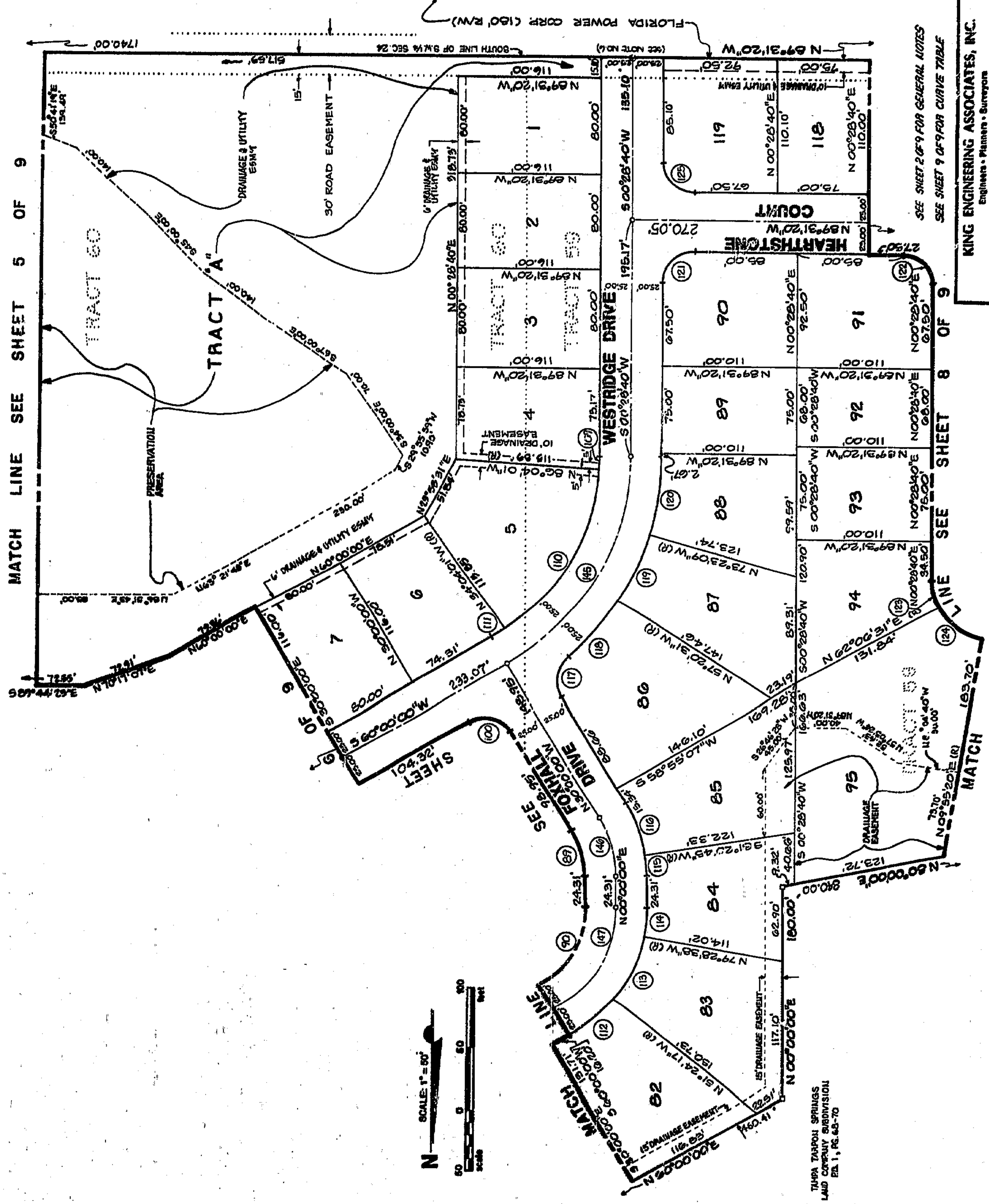
BEING A REPLAT OF A PORTION OF TRACTS 45, 46, 47, 48, 57, 58, 59, AND 60 OF TAMPA - TARPON SPRINGS LAND COMPANY SUBDIVISION PLAT BOOK 1, PAGES 68-70 AND A PART OF THE SOUTHEAST 1/4, AND A PART OF THE SOUTHWEST 1/4 OF SECTION 24, TOWNSHIP 26 SOUTH, RANGE 16 EAST, PASCO COUNTY, FLORIDA.



KING ENGINEERING ASSOCIATES, INC.  
 Engineers • Planners • Surveyors  
 6400 MASSACHUSETTS AVENUE • SUITE 4-3 • NEW PORT RICHEY, FL 34883 • (813) 848-0924

# GLENWOOD OF GULF TRACE

BEING A REPLAT OF A PORTION OF TRACTS 45, 46, 47, 48, 57, 58, 59, AND 60 OF TAMPA-TARPOON SPRINGS LAND COMPANY SUBDIVISION PLAT BOOK 1, PAGES 66-70 AND A PART OF THE SOUTHEAST 1/4, AND A PART OF THE SOUTHWEST 1/4 OF SECTION 24, TOWNSHIP 26 SOUTH, RANGE 15 EAST, PASCO COUNTY, FLORIDA.



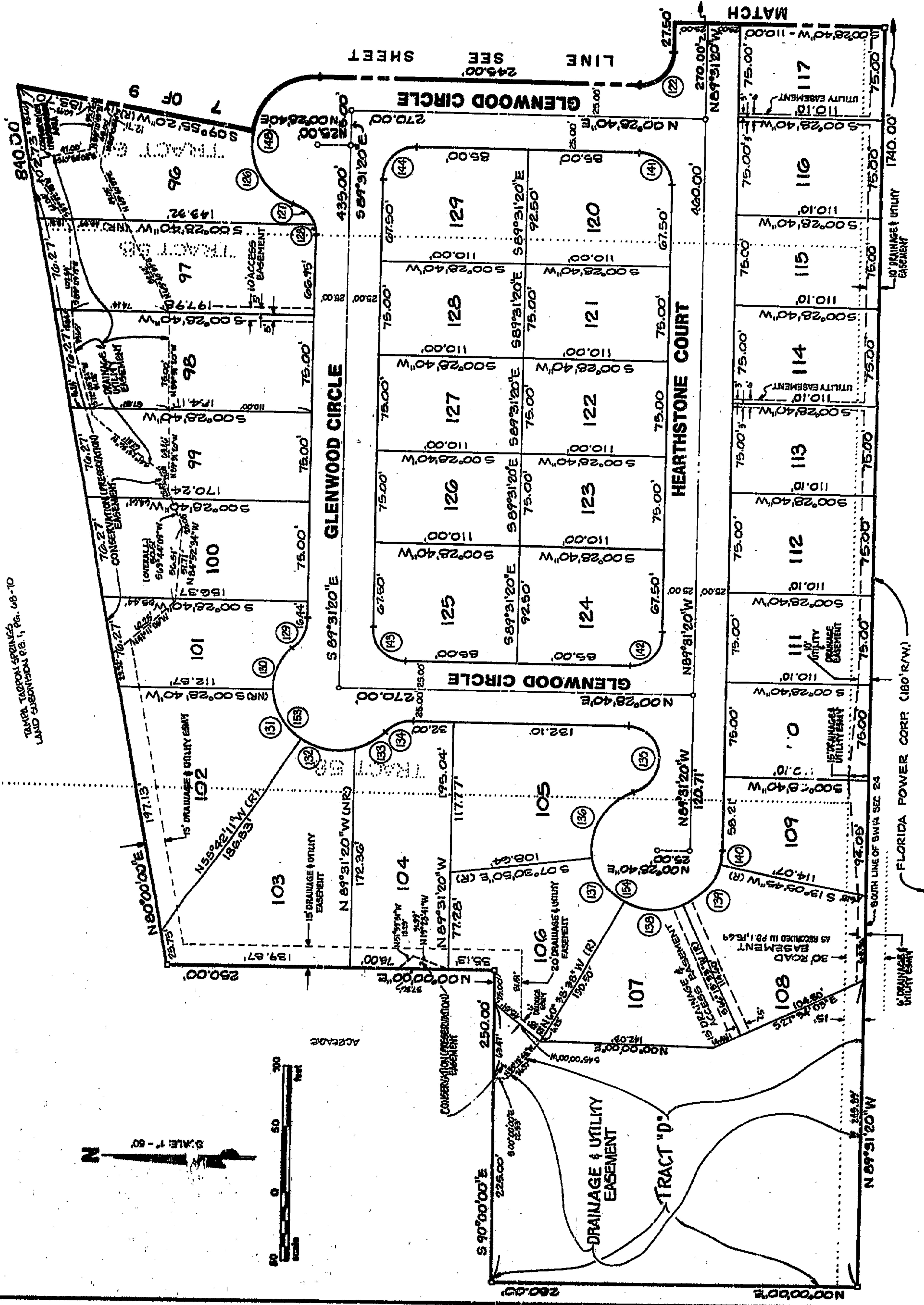
SEE SHEET 2 OF 9 FOR GENERAL NOTES  
SEE SHEET 9 OF 9 FOR CURVE TABLE

**KING ENGINEERING ASSOCIATES, INC.**  
Engineers • Planners • Surveyors  
608 MASSACHUSETTS AVENUE • SUITE A-3 • NEW PORT RICHEY, FL 34653 • (813) 843-0261

# GLENWOOD OF GULF TRACE

BEING A REPLAT OF A PORTION OF TRACTS 45, 46, 47, 48, 57, 58, 59, AND 60 OF TAMPA-TARPON SPRINGS LAND COMPANY SUBDIVISION PLAT BOOK I, PAGES 68-70 AND A PART OF THE SOUTHEAST 1/4, AND A PART OF THE SOUTHWEST 1/4 OF SECTION 24, TOWNSHIP 26 SOUTH, RANGE 15 EAST, PASCO COUNTY, FLORIDA.

SEE SHEET 2 OF 9 FOR GENERAL NOTES  
SEE SHEET 9 OF 9 FOR CURVE TABLE



**KING ENGINEERING ASSOCIATES, INC.**  
Engineers • Planners • Surveyors  
8408 MASSACHUSETTS AVENUE • SUITE A-2 • NEW PORT RICHEY, FL 34653 • (813) 841-9064

27/9

# GLENWOOD OF GULF TRACE

BEING A REPLAT OF A PORTION OF TRACTS 45, 46, 47, 48, 57, 58, 59, AND 60 OF TAMPA-TARPON SPRINGS LAND COMPANY SUBDIVISION PLAT BOOK 1, PAGES 66-70 AND A PART OF THE SOUTHEAST 1/4, AND A PART OF THE SOUTHWEST 1/4 OF SECTION 24, TOWNSHIP 26 SOUTH, RANGE 15 EAST, PASCO COUNTY, FLORIDA.

CURVE	RADIUS	DELTA	ARC	CHORD	CHORD BEARING	CURVE	RADIUS	DELTA	ARC	CHORD	CHORD BEARING
1	325.00'	50°00'00"	112.45'	112.87'	S 48°41'23"E	66	645.00'	07°22'53"	36.03'	38.03'	S 84°20'23"W
2	325.00'	50°00'00"	112.45'	112.87'	S 29°44'23"E	67	25.00'	45°45'08"	19.96'	19.44'	S 63°08'10"W
3	325.00'	18°44'23"	111.87'	111.87'	S 08°52'12"E	68	50.00'	78°30'30"	24.88'	24.62'	S 54°21'50"W
4	25.00'	80°21'48"	29.47'	35.50'	N 45°13'53"E	69	50.00'	57°03'52"	49.79'	47.76'	N 82°41'14"W
5	25.00'	10°21'48"	30.77'	28.87'	S 54°18'21"E	70	50.00'	49°39'50"	43.34'	42.00'	S 29°19'38"E
6	50.00'	10°21'48"	61.55'	57.74'	S 54°18'21"E	71	50.00'	53°41'06"	46.85'	45.15'	N 22°20'50"E
7	50.00'	111°19'07"	97.14'	82.57'	N 24°48'15"E	72	25.00'	48°11'22"	21.06'	20.41'	N 25°03'41"E
8	50.00'	68°54'48"	60.11'	56.58'	N 55°18'44"W	73	25.00'	82°49'08"	35.14'	33.07'	N 40°24'05"W
9	25.00'	80°21'48"	39.07'	35.21'	N 44°48'07"W	74	375.00'	09°59'43"	65.42'	65.34'	N 76°49'18"W
10	375.00'	01°46'18"	11.59'	11.59'	N 00°53'08"W	75	375.00'	10°42'42"	70.11'	70.01'	N 66°28'05"W
11	375.00'	10°42'42"	70.11'	70.01'	N 07°07'37"W	76	375.00'	10°42'42"	70.11'	70.01'	N 66°28'05"W
12	375.00'	15°24'38"	86.86'	86.86'	N 19°16'17"W	77	375.00'	08°58'44"	65.31'	65.29'	N 45°24'40"W
13	25.00'	80°21'48"	36.14'	33.07'	N 15°20'58"E	78	25.00'	82°49'08"	36.14'	35.07'	N 81°49'53"W
14	350.00'	33°14'28"	200.076'	200.22'	N 16°27'14"W	79	350.00'	10°38'46"	64.83'	64.74'	N 64°29'22"E
16	25.00'	90°00'00"	39.27'	35.36'	S 44°23'56"E	80	25.00'	40°07'53"	17.51'	17.16'	N 78°13'57"E
17	25.00'	90°00'00"	39.27'	35.36'	N 45°30'04"E	81	25.00'	40°07'53"	17.51'	17.16'	N 78°13'57"E
18	150.00'	24°50'03"	65.02'	64.51'	N 78°05'02"E	82	50.00'	56°08'20"	48.96'	47.03'	N 76°53'12"W
19	150.00'	81°26'50"	55.23'	54.92'	N 55°07'05"E	83	50.00'	53°07'48"	46.36'	44.72'	S 20°15'26"W
20	150.00'	37°56'50"	82.76'	81.28'	N 63°23'14"E	84	50.00'	53°07'48"	46.36'	44.72'	S 20°15'26"W
21	25.00'	68°13'13"	27.37'	26.02'	S 68°08'05"E	85	50.00'	53°48'22"	47.83'	46.02'	N 34°50'04"E
22	50.00'	107°29'34"	87.84'	76.87'	S 85°06'15"E	86	50.00'	54°48'14"	47.83'	46.02'	N 34°50'04"E
23	50.00'	83°33'25"	81.65'	72.88'	N 02°11'44"W	87	25.00'	53°46'42"	22.47'	22.61'	N 37°49'18"E
24	50.00'	74°48'24"	63.25'	60.73'	N 82°21'44"W	88	300.00'	30°00'00"	39.27'	38.82'	N 15°00'00"W
25	50.00'	05°29'17"	4.79'	4.79'	S 2°28'20"W	89	75.00'	60°00'00"	78.54'	75.00'	N 30°00'00"W
26	175.00'	18°25'08"	17.27'	16.33'	S 70°31'50"W	90	75.00'	60°00'00"	78.54'	75.00'	N 30°00'00"W
27	175.00'	05°11'31"	56.26'	56.02'	S 31°15'12"W	91	595.00'	01°01'53"	10.71'	10.71'	N 60°30'57"E
28	175.00'	05°11'31"	17.89'	17.89'	S 31°15'12"W	92	595.00'	08°25'04"	89.32'	89.24'	N 65°19'54"E
29	25.00'	68°13'13"	29.90'	29.90'	N 79°41'48"W	93	595.00'	07°52'32"	89.20'	88.12'	N 73°52'46"E
30	75.00'	44°19'12"	59.01'	56.53'	S 67°33'26"W	94	595.00'	07°52'32"	81.43'	81.37'	N 82°02'49"E
31	25.00'	44°19'12"	19.24'	18.86'	S 67°33'26"W	95	25.00'	95°01'57"	41.47'	36.87'	S 46°30'58"E
32	25.00'	90°00'00"	39.27'	35.36'	S 00°25'50"E	96	25.00'	82°49'08"	36.14'	33.07'	S 4°29'35"W
33	100.00'	43°55'54"	60.17'	78.04'	S 67°32'07"W	97	375.00'	08°54'28"	64.84'	64.76'	S 78°51'56"W
34	50.00'	44°19'12"	39.68'	37.72'	N 67°35'25"W	98	375.00'	09°42'01"	63.60'	63.52'	S 69°08'13"W
35	150.00'	08°33'50"	22.29'	22.27'	N 67°35'25"W	99	375.00'	09°11'43"	27.46'	27.45'	S 62°03'51"W
36	150.00'	44°19'12"	145.10'	159.51'	N 81°10'41"E	100	25.00'	90°00'00"	39.27'	35.36'	N 75°00'00"W
37	125.00'	45°35'54"	100.21'	97.55'	N 67°32'07"E	101	325.00'	09°18'31"	1.76'	1.76'	N 60°29'18"E
38	175.00'	10°26'24"	32.40'	32.36'	N 51°27'15"E	102	325.00'	18°47'00"	112.16'	112.59'	N 70°17'07"E
39	175.00'	00°49'50"	2.09'	2.09'	N 45°48'28"E	103	325.00'	20°00'00"	113.45'	112.87'	S 89°44'23"E
40	25.00'	67°38'23"	29.66'	27.86'	N 79°27'15"E	104	325.00'	20°00'00"	113.45'	112.87'	S 89°44'23"E
41	50.00'	50°00'19"	44.07'	42.65'	N 89°11'21"E	105	620.00'	31°00'00"	335.45'	331.38'	S 75°30'00"W
42	50.00'	50°00'19"	44.07'	42.65'	N 89°11'21"E	106	350.00'	31°00'00"	189.37'	187.07'	S 75°30'00"W
43	50.00'	78°39'30"	66.64'	42.92'	N 37°31'06"E	107	350.00'	120°00'00"	739.04'	606.02'	S 63°00'00"E
44	25.00'	34°48'10"	10.82'	10.74'	N 27°12'44"W	108	325.00'	46°31'11"	229.84'	225.08'	N 70°14'24"E
45	25.00'	49°10'23"	18.84'	18.40'	N 54°08'24"W	109	175.00'	09°27'19"	158.89'	153.43'	N 02°12'30"E
46	175.00'	00°54'50"	2.80'	2.80'	N 20°10'08"W	110	175.00'	09°27'19"	158.89'	153.43'	N 29°55'59"E
47	25.00'	03°47'57"	39.27'	35.36'	N 45°30'04"E	111	175.00'	04°04'01"	12.42'	12.42'	N 57°48'00"E
48	50.00'	70°21'44"	30.77'	29.87'	N 69°07'49"E	112	125.00'	21°24'17"	46.70'	46.43'	S 49°17'51"W
49	25.00'	70°21'44"	30.77'	29.87'	N 35°45'56"E	113	125.00'	28°04'21"	61.24'	60.63'	S 24°33'32"W
50	50.00'	112°30'23"	58.47'	83.31'	N 10°48'38"E	114	125.00'	10°31'22"	22.96'	22.92'	S 05°19'41"W
51	50.00'	88°14'00"	75.69'	69.67'	N 89°58'33"W	115	125.00'	09°30'15"	18.88'	18.66'	S 04°19'37"E
52	50.00'	47°08'23"	41.15'	40.00'	N 24°04'45"E	116	125.00'	21°20'45"	46.57'	46.30'	S 19°19'37"E
53	350.00'	08°01'17"	49.00'	48.96'	S 26°29'26"W	117	225.00'	15°02'39"	34.24'	31.62'	S 09°13'53"W
54	350.00'	19°49'01"	77.58'	77.42'	S 76°07'47"W	118	225.00'	15°02'39"	34.24'	31.62'	S 09°13'53"W
55	300.00'	16°43'29"	87.57'	87.26'	N 76°55'22"E	119	225.00'	15°08'11"	63.01'	62.80'	S 34°38'10"W
56	25.00'	80°12'57"	41.35'	36.93'	S 47°06'25"E	120	225.00'	16°08'11"	63.01'	63.16'	S 08°22'45"W
57	125.00'	30°33'28"	66.85'	66.05'	S 15°49'17"W	121	25.00'	90°00'00"	39.27'	35.36'	S 45°28'40"W
58	125.00'	8°37'02"	55.88'	55.42'	S 43°37'01"W	122	25.00'	90°00'00"	39.27'	35.36'	N 44°31'20"W
60	150.00'	22°56'27"	60.06'	59.66'	N 11°39'18"E	123	50.00'	28°22'09"	24.76'	24.50'	N 13°42'24"W
61	150.00'	33°19'01"	97.22'	86.00'	N 40°05'02"E	124	50.00'	52°11'11"	45.54'	43.99'	N 53°59'04"W
62	645.00'	04°01'35"	45.33'	45.32'	S 67°00'47"W	125	25.00'	90°00'00"	39.27'	35.36'	S 44°21'00"E
63	645.00'	06°24'25"	72.13'	72.09'	S 67°13'47"W	126	50.00'	79°58'24"	64.28'	64.28'	S 59°55'08"W
64	645.00'	06°24'25"	72.13'	72.09'	S 73°38'11"W	127	25.00'	18°46'59"	8.20'	8.16'	S 45°48'18"W
65	645.00'	05°48'38"	65.41'	65.38'	S 79°44'43"W	128	25.00'	48°11'22"	21.03'	20.41'	S 81°05'10"W
						129	50.00'	51°14'25"	44.72'	43.24'	N 66°59'10"W

**KING ENGINEERING ASSOCIATES, INC.**  
 Engineers • Planners • Surveyors  
 8408 MASSACHUSETTS AVENUE • SUITE A-1 • NEW PORT RICHEY, FL 34115 • (813) 844-0909